

FRANCE

France Quick Facts

Official Name: French Republic
Total area: 551,500 sq km (met. France)
 92,301 sq km (French overseas regions)
Population: 62,814,233 (met. France)
 4,021,921 (French overseas regions)
 (July 2016 est.)
GDP: \$2.737 trillion (2016 est.)
Government: semi-presidential republic
Capital: Paris
Motto: Liberty, Equality, Fraternity

France has historically been a crossroads for the people of Europe. It is located in western Europe, bordering the Atlantic Ocean and the English Channel on the northwest, Spain and Andorra on the southwest, and the Mediterranean Sea on the southeast. On the east, France is bordered by Belgium, Luxembourg, Germany, Switzerland, Italy, and Monaco.

Mainland France, located in Europe, is referred to as metropolitan France. There are five overseas regions that are considered part of France. These are French Guiana, Guadeloupe, Martinique, Mayotte, and Reunion. The people of these regions are French citizens. They can vote for the French president, and they have representatives in the French Parliament. There

are also other overseas collectives that are under French administration.

The head of state in France is the president, who is elected by majority vote every five years. The president controls foreign policy and defense. The head of government is the prime minister, who is appointed by the president with the approval of the Parliament. The prime minister is usually from the majority party in the Parliament. The prime minister is in charge of domestic policy and the running of the government. The Parliament is the legislative branch of French government. It consists of the Senate and the National Assembly. The highest courts in France are the Court of Cassation and the Constitutional Council.

France has rebounded from the great devastation suffered during World Wars I and II to become one of the strongest economies in Europe. French exports include wine, cheese, automobiles, electronics, and clothing. Tourism is a major industry in France. It has the third largest income from tourism in the world, with more than 84 million foreign visitors each year. Agricultural products include grains, sugar beets, potatoes, wine grapes, beef, dairy products, and fish.

The rivers of France have long been avenues for the transportation of people and goods throughout France and to the rest of the world. In northern France, the Seine River flows through Paris and empties into the English Channel. The Loire River system drains the central part of France and empties into the Atlantic Ocean near the city of Saint-Nazaire. The Rhone River flows from north to south in the eastern part of France. It empties into the Mediterranean Sea. The Rhine River starts in Switzerland and forms part of France's border with Germany. It flows into the North Sea.

The people of France are some of the most ethnically diverse on Earth. Immigrants from former colonies and possessions in Africa, the Americas, and Asia have settled in France over the last century. More recently, refugees from war-torn areas of the Middle East, Africa, and central and eastern Europe have been allowed into the country. While this creates new pressure on France's resources, it continues the age-old tradition of cultures coming together to produce new trends in art, literature, music, fashion, and food. This has made France a world leader in culture.



Vineyards Near Chavignol, France

Name: _____ Date: _____

FRANCE CODED PUZZLE

Directions: Use the decoder key to fill in the blanks for each statement below.

| | | | | | | | | | | | | | | | | | | | | | | | | | |
|---|---|---|---|---|---|---|---|---|----|----|----|----|----|----|----|----|----|----|----|----|----|----|----|----|----|
| A | B | C | D | E | F | G | H | I | J | K | L | M | N | O | P | Q | R | S | T | U | V | W | X | Y | Z |
| 1 | 2 | 3 | 4 | 5 | 6 | 7 | 8 | 9 | 10 | 11 | 12 | 13 | 14 | 15 | 16 | 17 | 18 | 19 | 20 | 21 | 22 | 23 | 24 | 25 | 26 |

1. The country of France located in Europe is called _____
 13 5 20 18 15 16 15 12 9 20 1 14
 France.

2. France's southeast coast is on the _____ Sea.
 13 5 4 9 20 5 18 18 1 14 5 1 14

3. The people of France's overseas regions are French _____
 3 9 20 9 26 5 14 19

4. The French head of state is the _____
 16 18 5 19 9 4 5 14 20

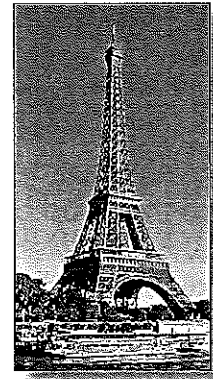
5. The _____ is in charge of domestic policy.
 16 18 9 13 5 13 9 14 9 19 20 5 18

6. The Parliament of France consists of the Senate and the

14 1 20 9 15 14 1 12 1 19 19 5 13 2 12 25

7. _____ is a major industry in France, with more
 20 15 21 18 9 19 13
 than 84 million foreign visitors each year.

8. The _____ flows through Paris.
 19 5 9 14 5 18 9 22 5 18

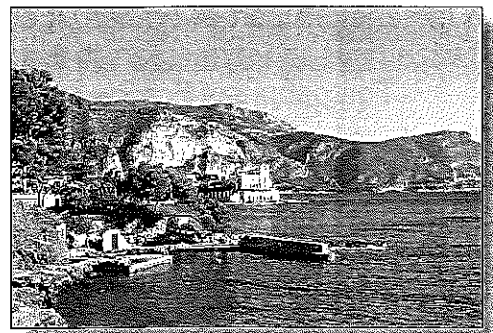


9. The Rhine River forms part of France's border with _____
 7 5 18 13 1 14 25

10. France is a world leader in _____, such as art, literature, music, fashion,
 3 21 12 20 21 18 5
 and food.

11. The population of France is _____ diverse.
 5 20 8 14 9 3 1 12 12 25

12. _____ from war-torn areas of
 18 5 6 21 7 5 5 19
 the world have settled in France.



Bonus: France is known around the world for its
 excellent _____ and _____
 23 9 14 5 3 8 5 5 19 5